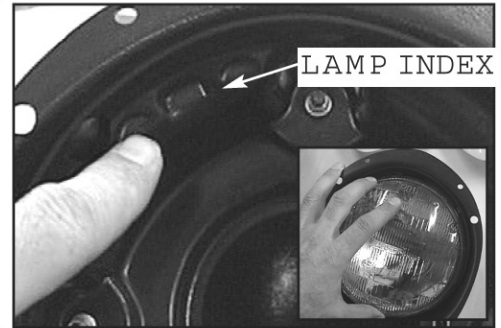
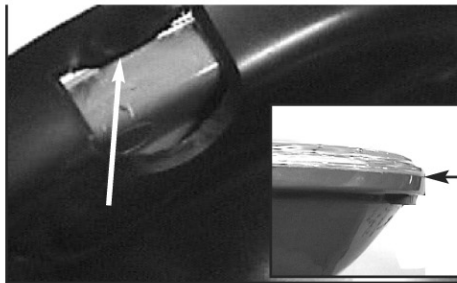
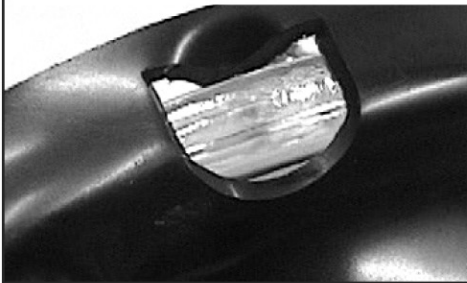


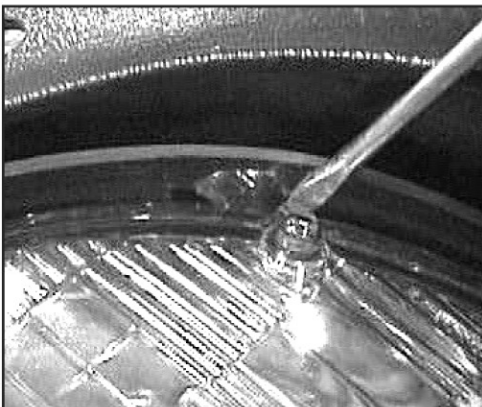
THESE PICTURE S SHOW LAMP ASSEMBLY OUT OF THE BUCKET. DO NOT REMOVE FROM BUCKET TO INSTALL LAMPS.



**STEP EIGHT:** BEFORE INSTALLING THE LAMPS, TAKE A MOMENT TO UNDERSTAND HOW THE LAMPS ARE HELD IN PLACE. THE THREE THUMB NAIL TABS ON THE EDGE OF THE LAMP ASSEMBLY HOLD THE LAMP IN PLACE AS SHOWN ABOVE FOR A SEALED BEAM.

ON THE SNAKE EYE OR BLUE DOT LAMPS, THE THUMB NAILS SNAP INTO GAP BETWEEN THE GLASS AND THE HOUSING, NOT OVER THE GLASS. SEE PHOTO ABOVE.

NOW ATTACH THE WIRING, ALIGN THE LAMP WITH THE LAMP INDEX, AND PRESS LAMP INTO PLACE. INSTALL TRIM AND MAKE SURE YOU HAVE CLEARANCE BETWEEN TRIM AND LAMP. NOW AIM THE HEADLAMPS AND YOU ARE DONE!



TAKE CARE WHEN REMOVING THE LAMPS. TO REMOVE THEM, PRY AT THE THUMB NAILS WITH A SMALL SCREWDRIVER. PRY ALL THREE A LITTLE AT A TIME UNTIL THE LAMP IS FREE. IF YOU HAVE QUESTIONS CALL US

**(419)629-1969**  
**tech line**